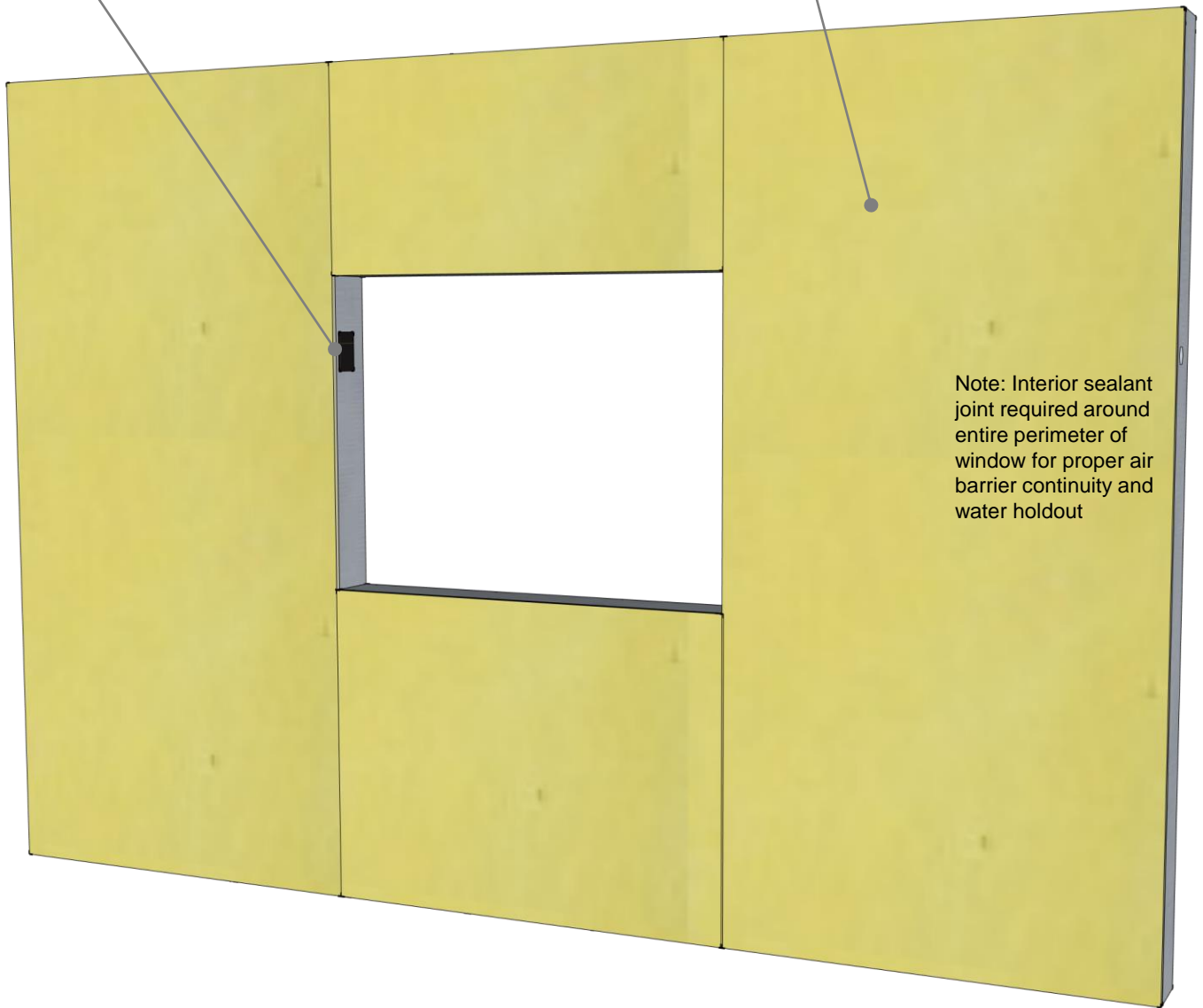


Step 1: Rough Opening Flashing System Commercial Window

PanelFlashing SA Self-Adhered scraps adhere to cover pre-punched metal stud holes

Sheathing in "as new" condition



Note: Interior sealant joint required around entire perimeter of window for proper air barrier continuity and water holdout

VAPROLIQUI-FLASH[™]

Step 1: Inspect rough opening, patch pre-punched holes with PanelFlashing SA

PRODUCT DESCRIPTION

VaproLiqui-Flash is a liquid applied, vapor permeable, waterproof, air barrier flashing system component for window and door rough openings. VaproLiquiFlash is designed to work with VaproFlashing and VaproShield field membranes as a complete system.

DISCLAIMER

Detail sketch is generic, representing suggested best practices for VaproShield materials, and does not represent a specific job site condition and therefore may not be applicable to certain projects. Detail sketch is designed for use as a reference and must be approved by the designer/ consultant of record for each project prior to installation by the subcontractor. Changes and approvals of VaproShield details are the sole responsibility of the designer/consultant of record. VaproShield is **not** the designer of record for building enclosure details and takes no responsibility for the accuracy or interpretation of actual project site conditions.

DRAWN BY: AR

DATE: 08/08/24

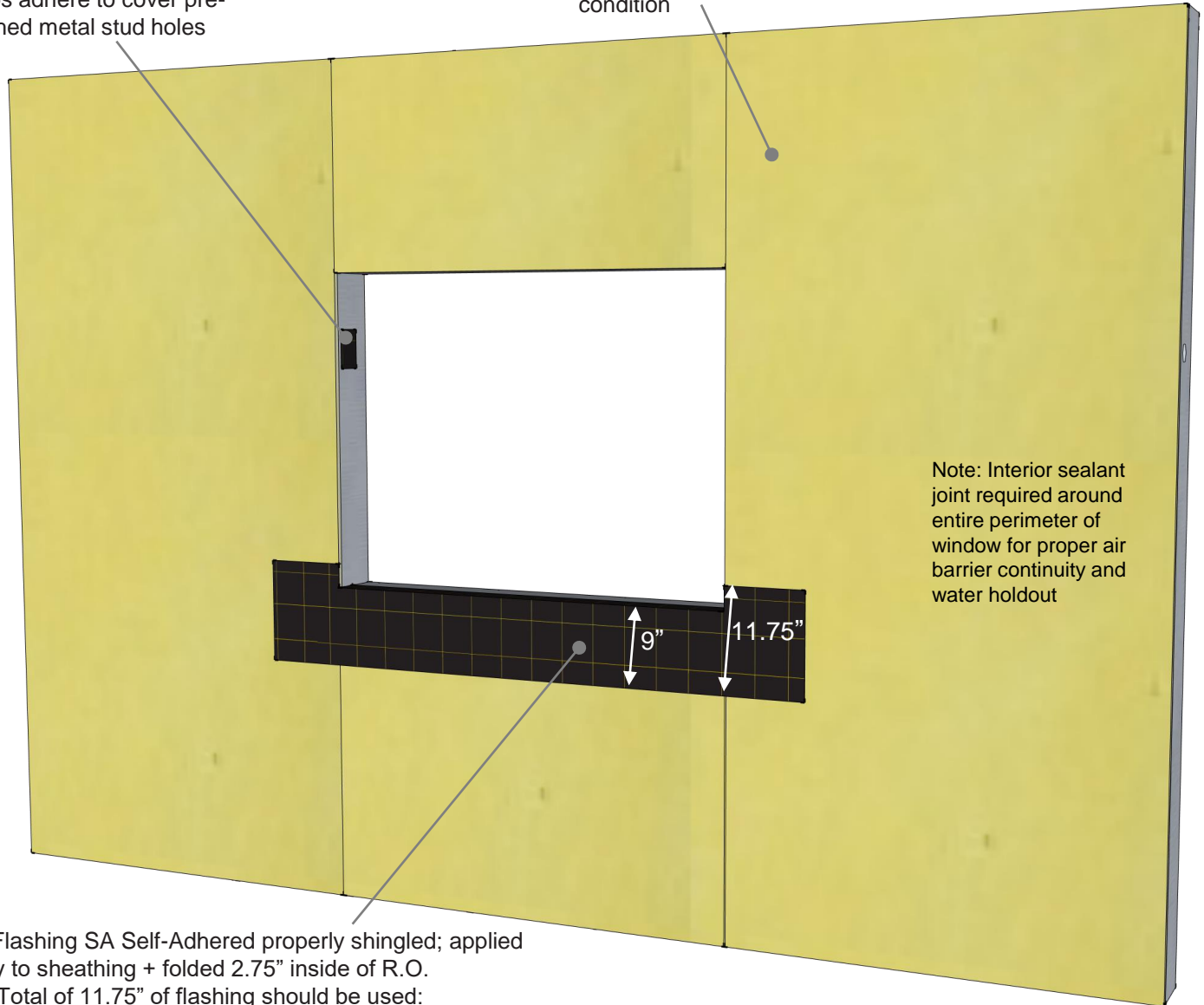
REF: 141-1

Always check www.VaproShield.com for the latest details and installation instructions

Step 2: Rough Opening Flashing System Commercial Window

PanelFlashing SA Self-Adhered scraps adhere to cover pre-punched metal stud holes

Sheathing in "as new" condition



PanelFlashing SA Self-Adhered properly shingled; applied directly to sheathing + folded 2.75" inside of R.O.

Note: Total of 11.75" of flashing should be used:

- 9" of flashing should be left on the face of the sheathing
- 6" of release film from the bottom of the flashing to be left attached for shingling over membrane.

VAPROLIQUI-FLASH[™]

Step 2: Install PanelFlashing SA into sill with 2.75" folded into R.O. 9" left on face, with bottom 6" of release film to remain attached.

PRODUCT DESCRIPTION

VaproLiqui-Flash is a liquid applied, vapor permeable, waterproof, air barrier flashing system component for window and door rough openings. VaproLiquiFlash is designed to work with VaproFlashing and VaproShield field membranes as a complete system.

DISCLAIMER

Detail sketch is generic, representing suggested best practices for VaproShield materials, and does not represent a specific job site condition and therefore may not be applicable to certain projects. Detail sketch is designed for use as a reference and must be approved by the designer/ consultant of record for each project prior to installation by the subcontractor. Changes and approvals of VaproShield details are the sole responsibility of the designer/consultant of record. VaproShield is **not** the designer of record for building enclosure details and takes no responsibility for the accuracy or interpretation of actual project site conditions.

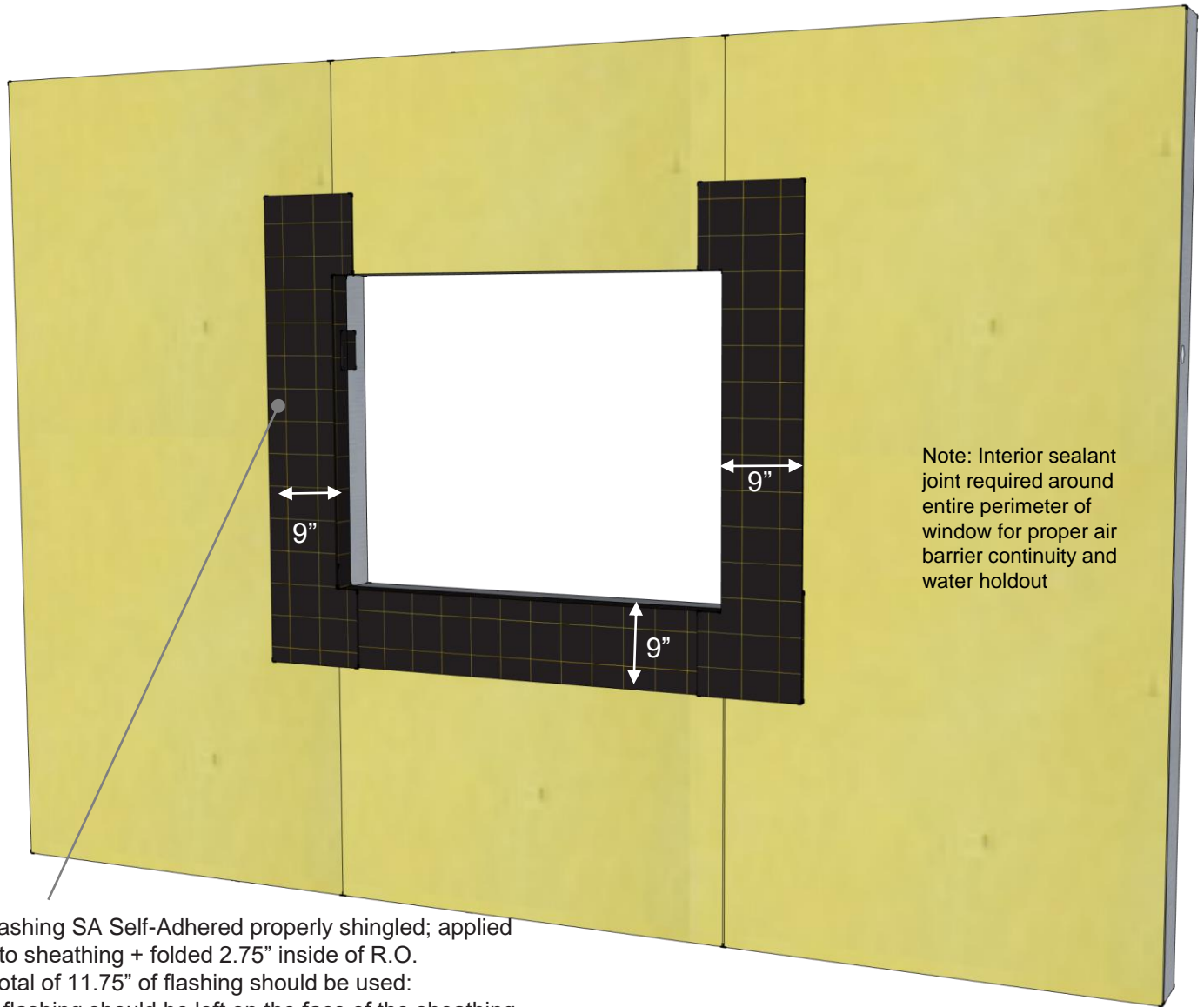
DRAWN BY: AR

DATE: 08/08/24

REF: 141-2

Always check www.VaproShield.com for the latest details and installation instructions

Step 3: Rough Opening Flashing System Commercial Window



PanelFlashing SA Self-Adhered properly shingled; applied directly to sheathing + folded 2.75" inside of R.O.

Note: Total of 11.75" of flashing should be used:

- 9" of flashing should be left on the face of the sheathing
- 6" of release film from the bottom of the flashing to be left attached for shingling over membrane.

VAPROLIQUI-FLASH[™]

Step 3: Install jamb pieces with 2.75" folded into R.O. 9" to be left on face.

PRODUCT DESCRIPTION

VaproLiqui-Flash is a liquid applied, vapor permeable, waterproof, air barrier flashing system component for window and door rough openings. VaproLiquiFlash is designed to work with VaproFlashing and VaproShield field membranes as a complete system.

DISCLAIMER

Detail sketch is generic, representing suggested best practices for VaproShield materials, and does not represent a specific job site condition and therefore may not be applicable to certain projects. Detail sketch is designed for use as a reference and must be approved by the designer/consultant of record for each project prior to installation by the subcontractor. Changes and approvals of VaproShield details are the sole responsibility of the designer/consultant of record. VaproShield is **not** the designer of record for building enclosure details and takes no responsibility for the accuracy or interpretation of actual project site conditions.

DRAWN BY: AR

DATE: 08/08/24

REF: 141-3

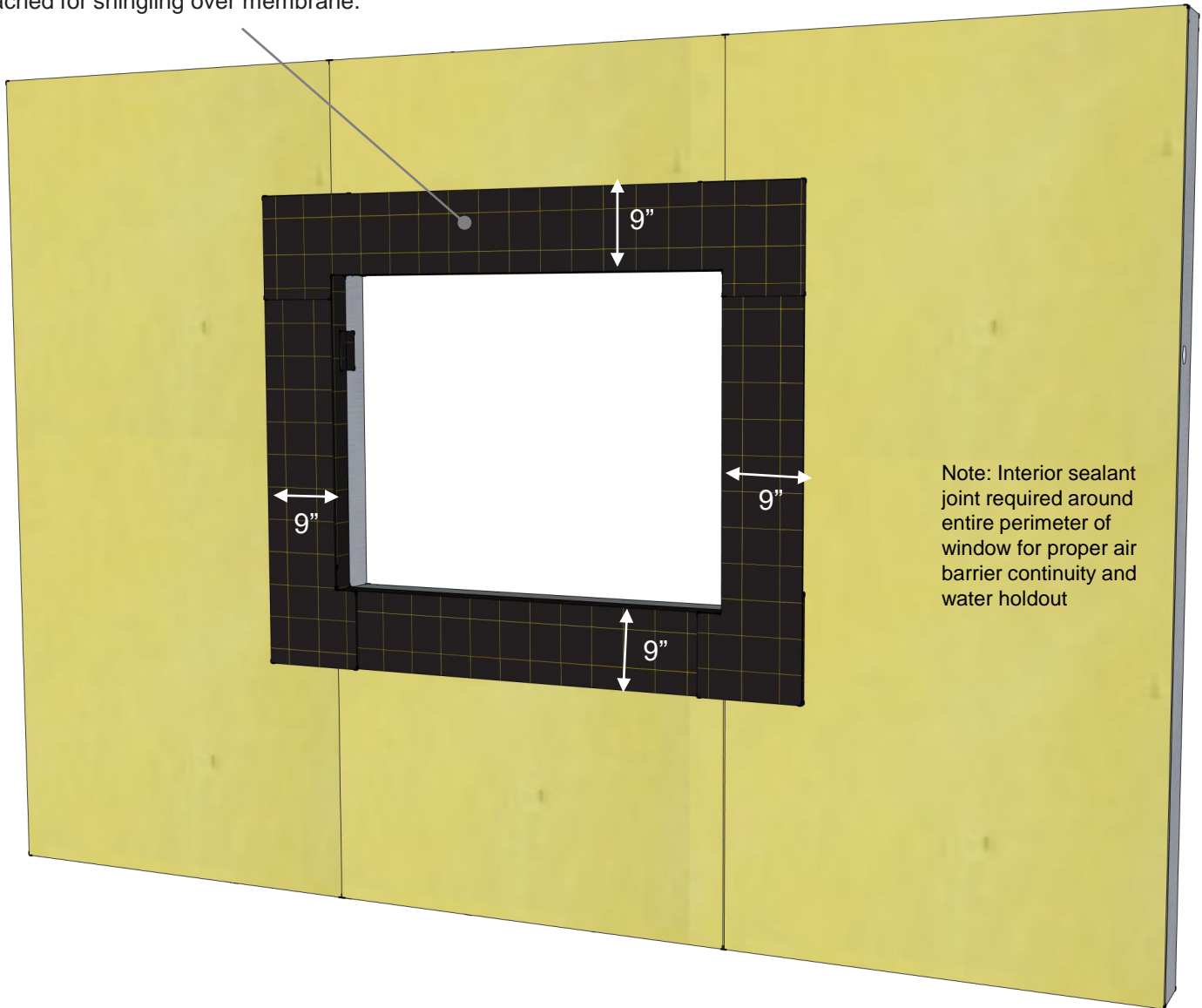
Always check www.VaproShield.com for the latest details and installation instructions

Step 4: Rough Opening Flashing System Commercial Window

PanelFlashing SA Self-Adhered properly shingled; applied directly to sheathing + folded 2.75" inside of R.O.

Note: Total of 11.75" of flashing should be used:

- 9" of flashing should be left on the face of the sheathing
- 6" of release film from the bottom of the flashing to be left attached for shingling over membrane.



VAPRO LIQUI-FLASH[™]

Step 4: Install head piece with 2.75" folded into R.O. 9" to be left on face.

DRAWN BY: AR

DATE: 08/08/24

PRODUCT DESCRIPTION

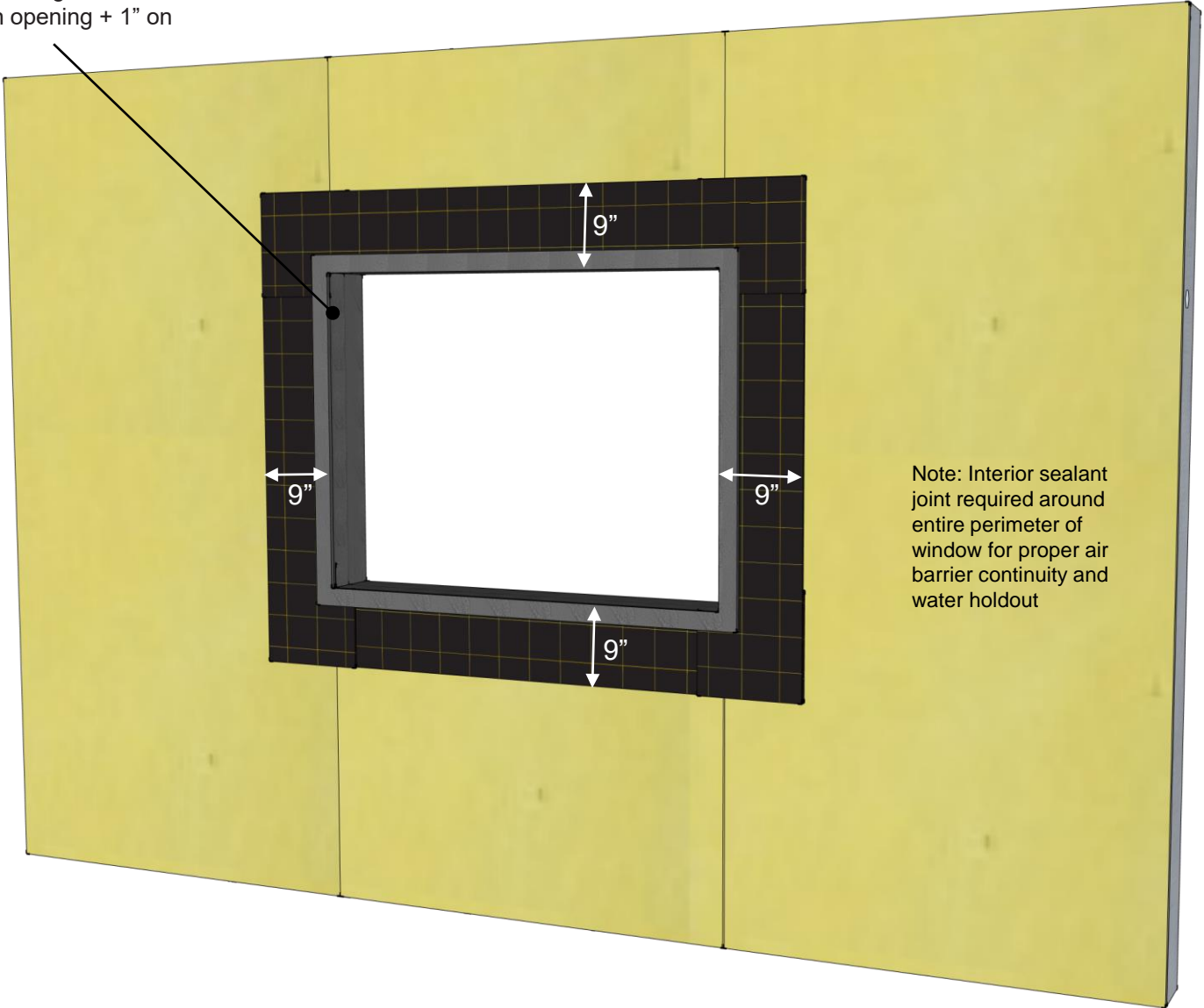
VaproLiqui-Flash is a liquid applied, vapor permeable, waterproof, air barrier flashing system component for window and door rough openings. VaproLiquiFlash is designed to work with VaproFlashing and VaproShield field membranes as a complete system.

DISCLAIMER

Detail sketch is generic, representing suggested best practices for VaproShield materials, and does not represent a specific job site condition and therefore may not be applicable to certain projects. Detail sketch is designed for use as a reference and must be approved by the designer/consultant of record for each project prior to installation by the subcontractor. Changes and approvals of VaproShield details are the sole responsibility of the designer/consultant of record. VaproShield is **not** the designer of record for building enclosure details and takes no responsibility for the accuracy or interpretation of actual project site conditions.

Step 5: Rough Opening Flashing System Commercial Window

VaproLiqui-Flash
full-coverage inside
rough opening + 1" on
face



Note: Interior sealant joint required around entire perimeter of window for proper air barrier continuity and water holdout

VAPROLIQUI-FLASH™

Step 5: Apply VaproLiqui-Flash to inside of R.O. (full coverage) and 1" on face

PRODUCT DESCRIPTION

VaproLiqui-Flash is a liquid applied, vapor permeable, waterproof, air barrier flashing system component for window and door rough openings. VaproLiquiFlash is designed to work with VaproFlashing and VaproShield field membranes as a complete system.

DISCLAIMER

Detail sketch is generic, representing suggested best practices for VaproShield materials, and does not represent a specific job site condition and therefore may not be applicable to certain projects. Detail sketch is designed for use as a reference and must be approved by the designer/consultant of record for each project prior to installation by the subcontractor. Changes and approvals of VaproShield details are the sole responsibility of the designer/consultant of record. VaproShield is **not** the designer of record for building enclosure details and takes no responsibility for the accuracy or interpretation of actual project site conditions.

DRAWN BY: AR

DATE: 08/08/24

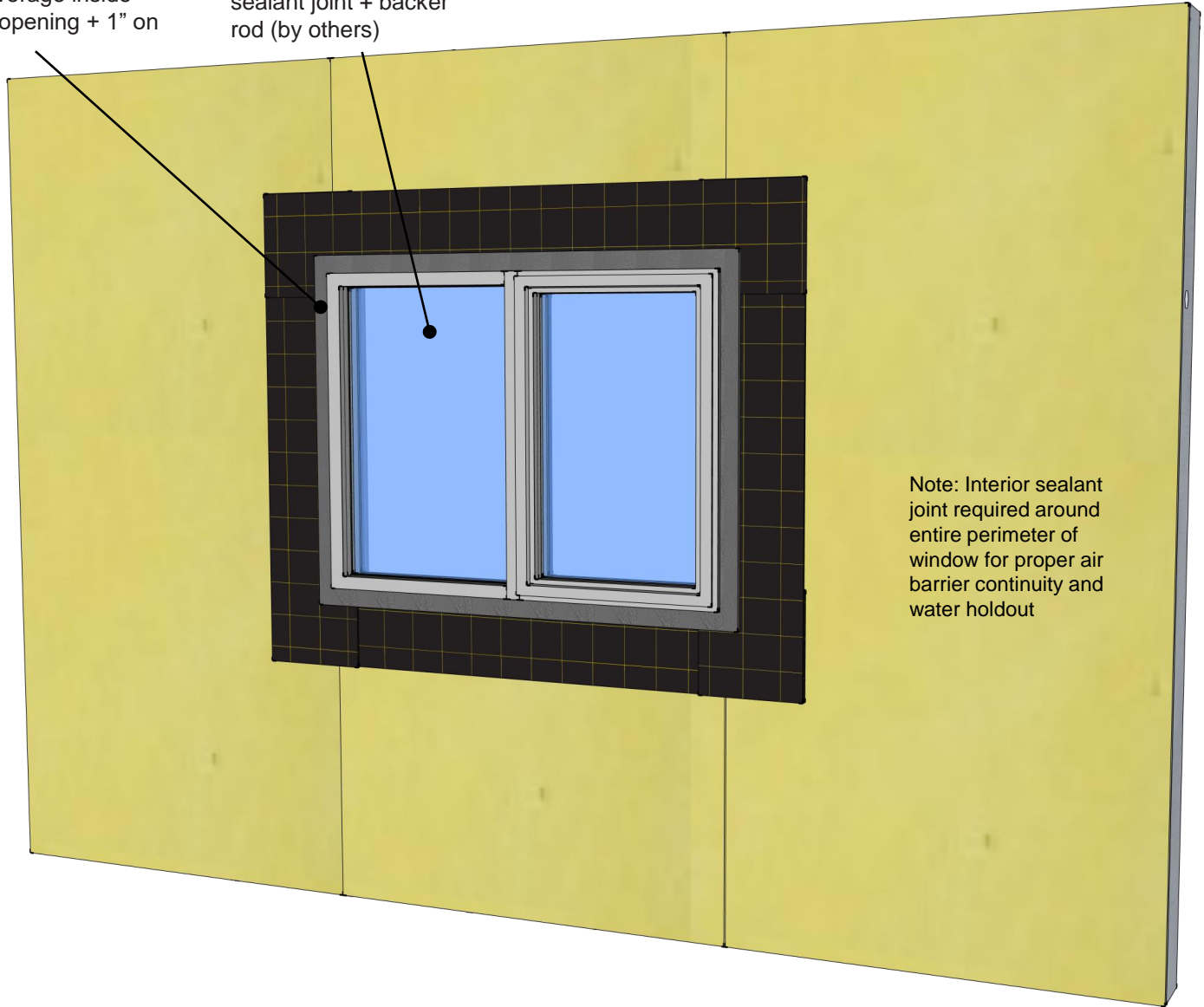
REF: 141-5

Always check www.VaproShield.com for the latest details and installation instructions

Step 6: Rough Opening Flashing System Commercial Window

VaproLiqui-Flash full-coverage inside rough opening + 1" on face

Commercial Window w/ sealant joint + backer rod (by others)



Note: Interior sealant joint required around entire perimeter of window for proper air barrier continuity and water holdout

VAPROLIQUI-FLASH[™]

Step 6: Install commercial window w/ perimeter sealant joint and backer rod (by others)

DRAWN BY: AR

DATE: 08/08/24

PRODUCT DESCRIPTION

VaproLiqui-Flash is a liquid applied, vapor permeable, waterproof, air barrier flashing system component for window and door rough openings. VaproLiquiFlash is designed to work with VaproFlashing and VaproShield field membranes as a complete system.

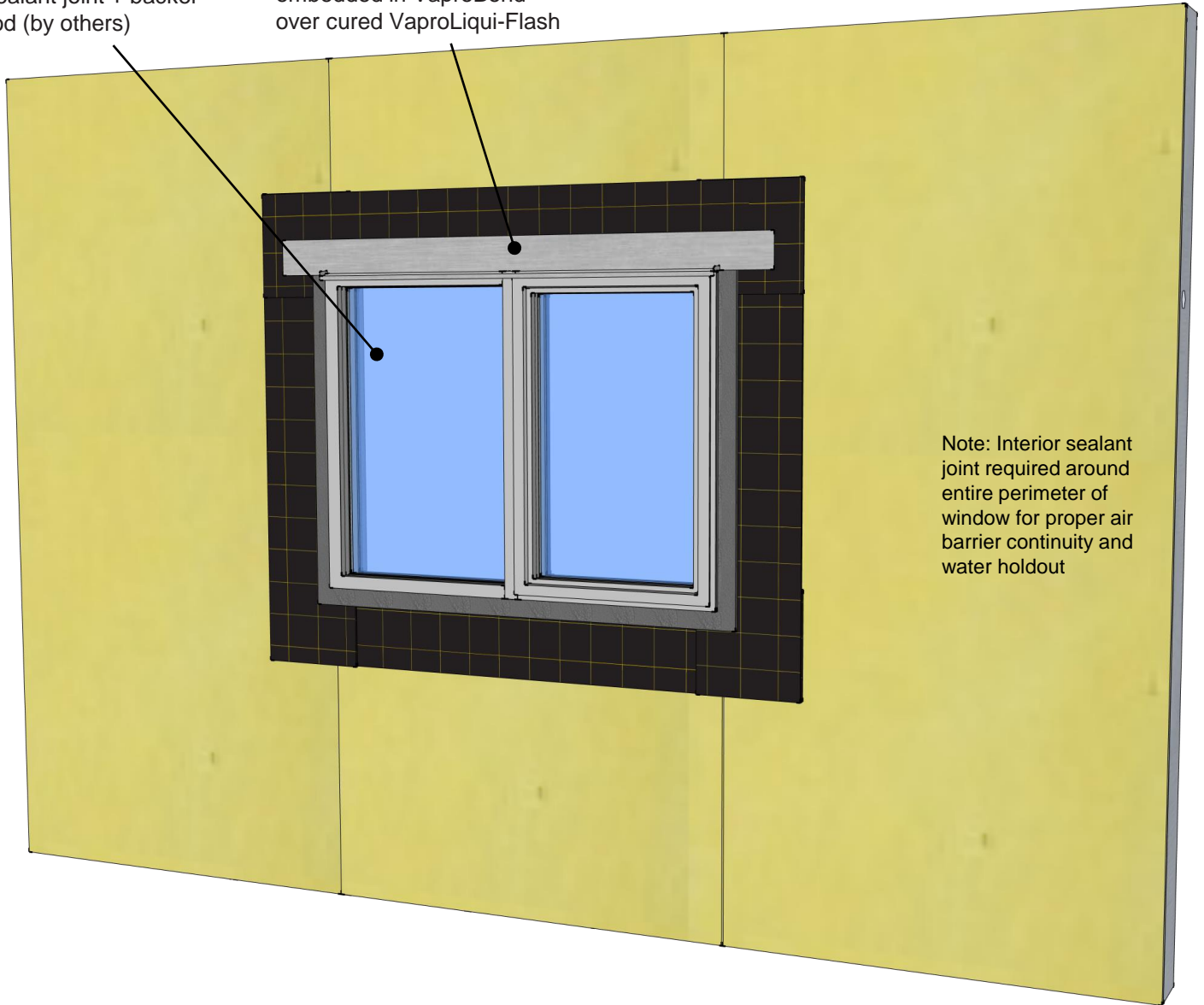
DISCLAIMER

Detail sketch is generic, representing suggested best practices for VaproShield materials, and does not represent a specific job site condition and therefore may not be applicable to certain projects. Detail sketch is designed for use as a reference and must be approved by the designer/ consultant of record for each project prior to installation by the subcontractor. Changes and approvals of VaproShield details are the sole responsibility of the designer/consultant of record. VaproShield is **not** the designer of record for building enclosure details and takes no responsibility for the accuracy or interpretation of actual project site conditions.

Step 7: Rough Opening Flashing System Commercial Window

Commercial Window w/
 sealant joint + backer
 rod (by others)

Head flashing (by others) fully
 embedded in VaproBond
 over cured VaproLiqui-Flash



Note: Interior sealant joint required around entire perimeter of window for proper air barrier continuity and water holdout

VAPROLIQUI-FLASH™

Step 7: Install metal head flashing (by others) fully embedded in VaproBond® 758 over cured VaproLiqui-Flash

PRODUCT DESCRIPTION

VaproLiqui-Flash is a liquid applied, vapor permeable, waterproof, air barrier flashing system component for window and door rough openings. VaproLiquiFlash is designed to work with VaproFlashing and VaproShield field membranes as a complete system.

DISCLAIMER

Detail sketch is generic, representing suggested best practices for VaproShield materials, and does not represent a specific job site condition and therefore may not be applicable to certain projects. Detail sketch is designed for use as a reference and must be approved by the designer/ consultant of record for each project prior to installation by the subcontractor. Changes and approvals of VaproShield details are the sole responsibility of the designer/consultant of record. VaproShield is **not** the designer of record for building enclosure details and takes no responsibility for the accuracy or interpretation of actual project site conditions.

DRAWN BY: AR

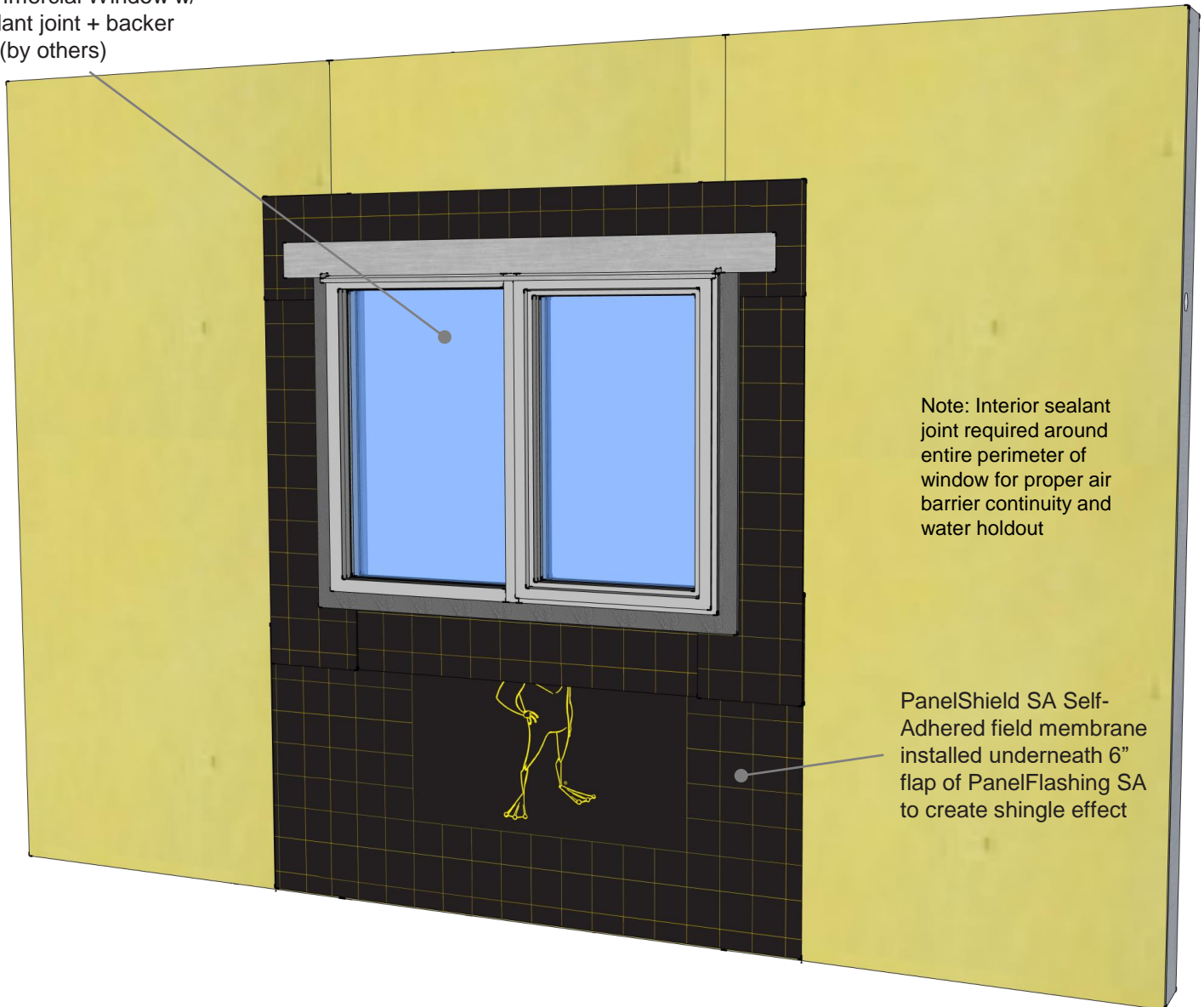
DATE: 08/08/24

REF: 141-7

Always check www.VaproShield.com for the latest details and installation instructions

Step 8: Rough Opening Flashing System Commercial Window

Commercial Window w/
sealant joint + backer
rod (by others)



Note: Interior sealant joint required around entire perimeter of window for proper air barrier continuity and water holdout

PanelShield SA Self-Adhered field membrane installed underneath 6" flap of PanelFlashing SA to create shingle effect

VAPROLIQUI-FLASH™

Step 8: Install field membrane underneath 6" flap of sill flashing to create shingle effect, remove release film, adhere to membrane

DRAWN BY: AR

DATE: 08/08/24

PRODUCT DESCRIPTION

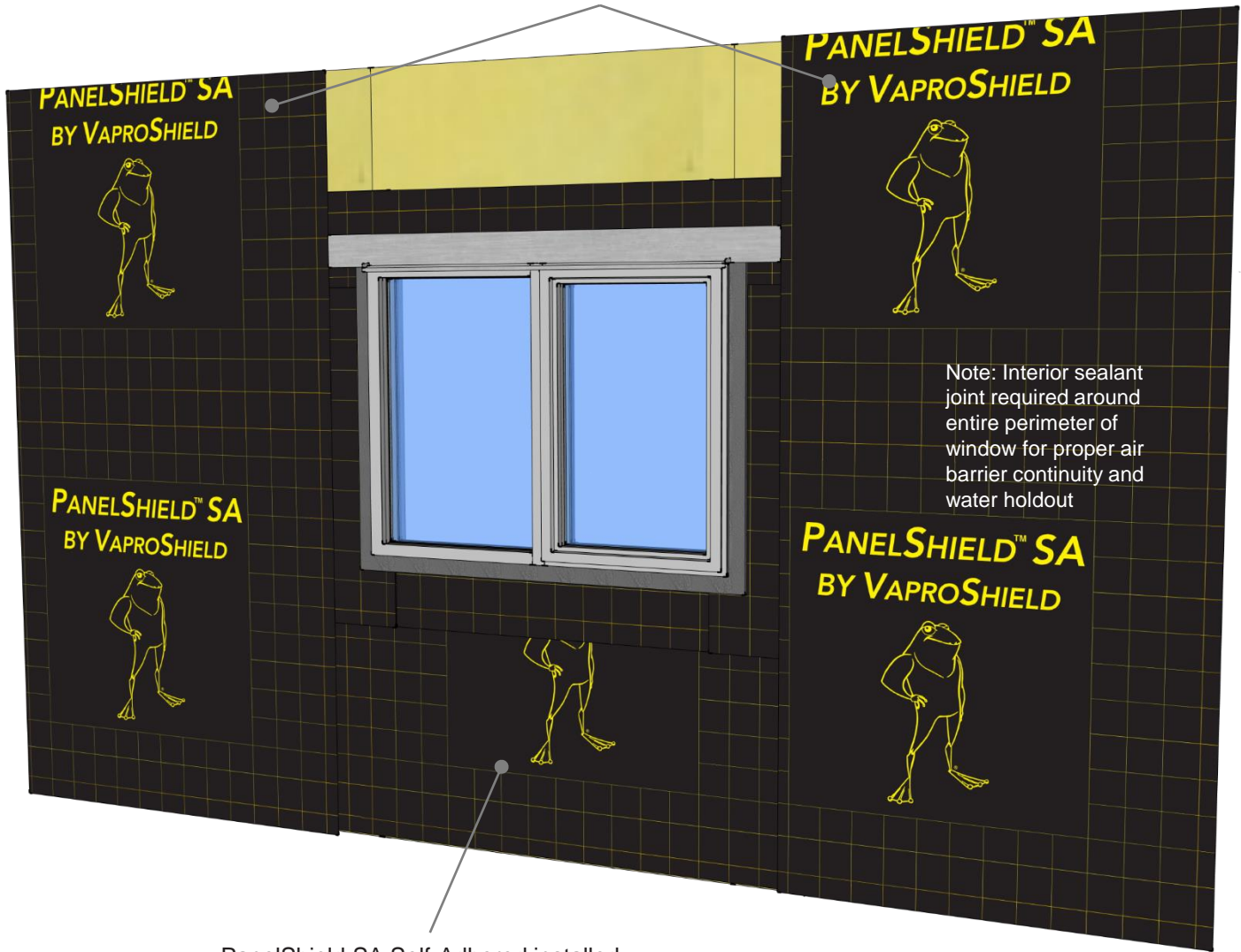
VaproLiqui-Flash is a liquid applied, vapor permeable, waterproof, air barrier flashing system component for window and door rough openings. VaproLiquiFlash is designed to work with VaproFlashing and VaproShield field membranes as a complete system.

DISCLAIMER

Detail sketch is generic, representing suggested best practices for VaproShield materials, and does not represent a specific job site condition and therefore may not be applicable to certain projects. Detail sketch is designed for use as a reference and must be approved by the designer/ consultant of record for each project prior to installation by the subcontractor. Changes and approvals of VaproShield details are the sole responsibility of the designer/consultant of record. VaproShield is **not** the designer of record for building enclosure details and takes no responsibility for the accuracy or interpretation of actual project site conditions.

Step 9: Rough Opening Flashing System Commercial Window

PanelShield SA Self-Adhered field membrane installed vertically with minimum 3" overlap



PanelShield SA Self-Adhered installed underneath 6" flap of VaproFlashing SA to create shingle effect

VAPROLIQUI-FLASH™

Step 9: Install field membrane vertically to sheathing, maintaining 3" minimum overlap with R.O. flashing

DRAWN BY: AR

DATE: 08/08/24

PRODUCT DESCRIPTION

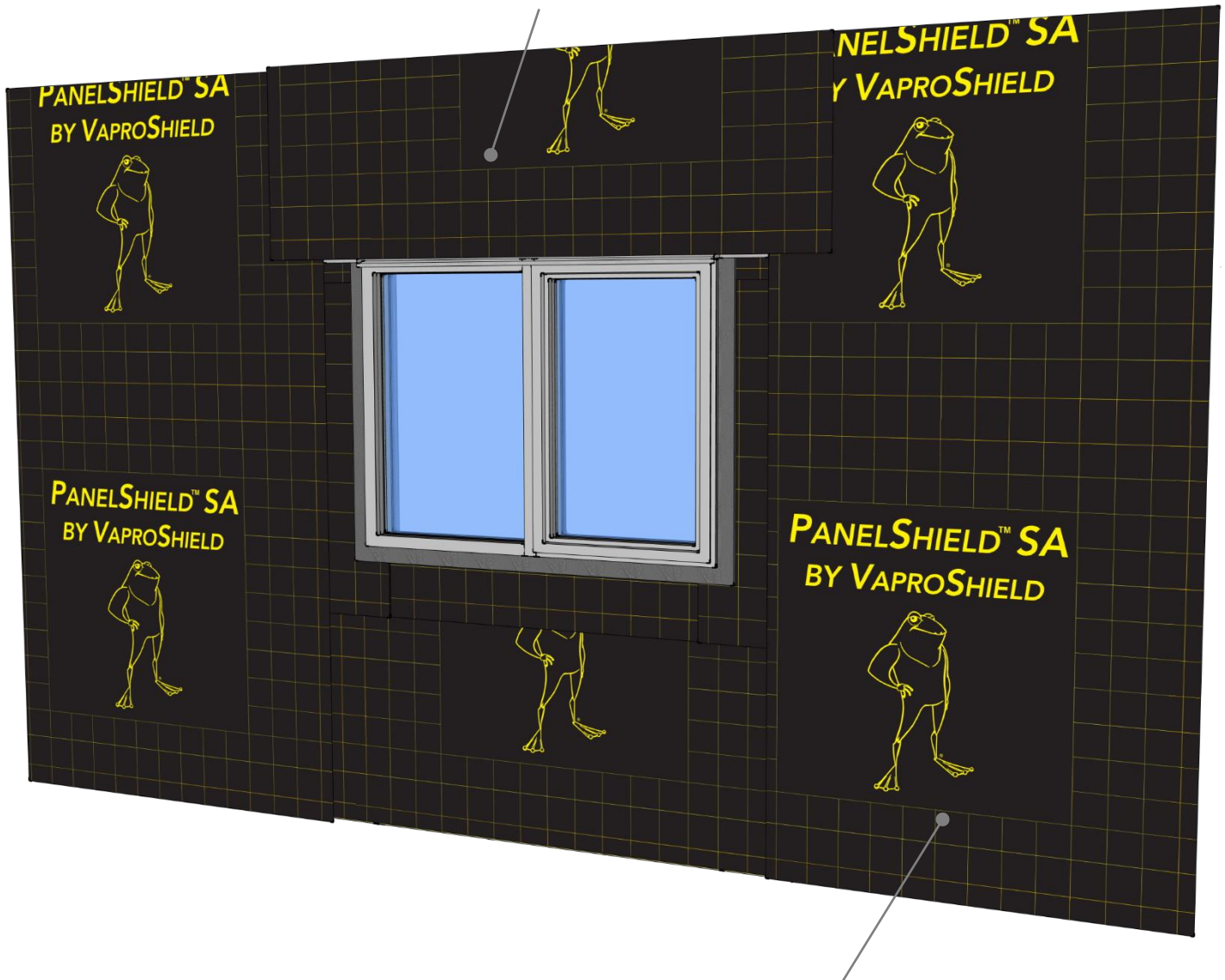
VaproLiqui-Flash is a liquid applied, vapor permeable, waterproof, air barrier flashing system component for window and door rough openings. VaproLiquiFlash is designed to work with VaproFlashing and VaproShield field membranes as a complete system.

DISCLAIMER

Detail sketch is generic, representing suggested best practices for VaproShield materials, and does not represent a specific job site condition and therefore may not be applicable to certain projects. Detail sketch is designed for use as a reference and must be approved by the designer/consultant of record for each project prior to installation by the subcontractor. Changes and approvals of VaproShield details are the sole responsibility of the designer/consultant of record. VaproShield is **not** the designer of record for building enclosure details and takes no responsibility for the accuracy or interpretation of actual project site conditions.

Step 10: Rough Opening Flashing System Commercial Window

PanelShield SA Self-Adhered installed over head flashing and PanelFlashing SA



PanelShield SA Self-Adhered field membrane installed vertically with minimum 3" overlap

VAPROLIQUI-FLASH™

Step 10: Install field membrane over metal head flashing, maintaining 3" minimum overlap to adjacent field membrane.

PRODUCT DESCRIPTION

VaproLiqui-Flash is a liquid applied, vapor permeable, waterproof, air barrier flashing system component for window and door rough openings. VaproLiquiFlash is designed to work with VaproFlashing and VaproShield field membranes as a complete system.

DISCLAIMER

Detail sketch is generic, representing suggested best practices for VaproShield materials, and does not represent a specific job site condition and therefore may not be applicable to certain projects. Detail sketch is designed for use as a reference and must be approved by the designer/consultant of record for each project prior to installation by the subcontractor. Changes and approvals of VaproShield details are the sole responsibility of the designer/consultant of record. VaproShield is **not** the designer of record for building enclosure details and takes no responsibility for the accuracy or interpretation of actual project site conditions.

DRAWN BY: AR

DATE: 08/08/24

REF: 141-10

Always check www.VaproShield.com for the latest details and installation instructions